

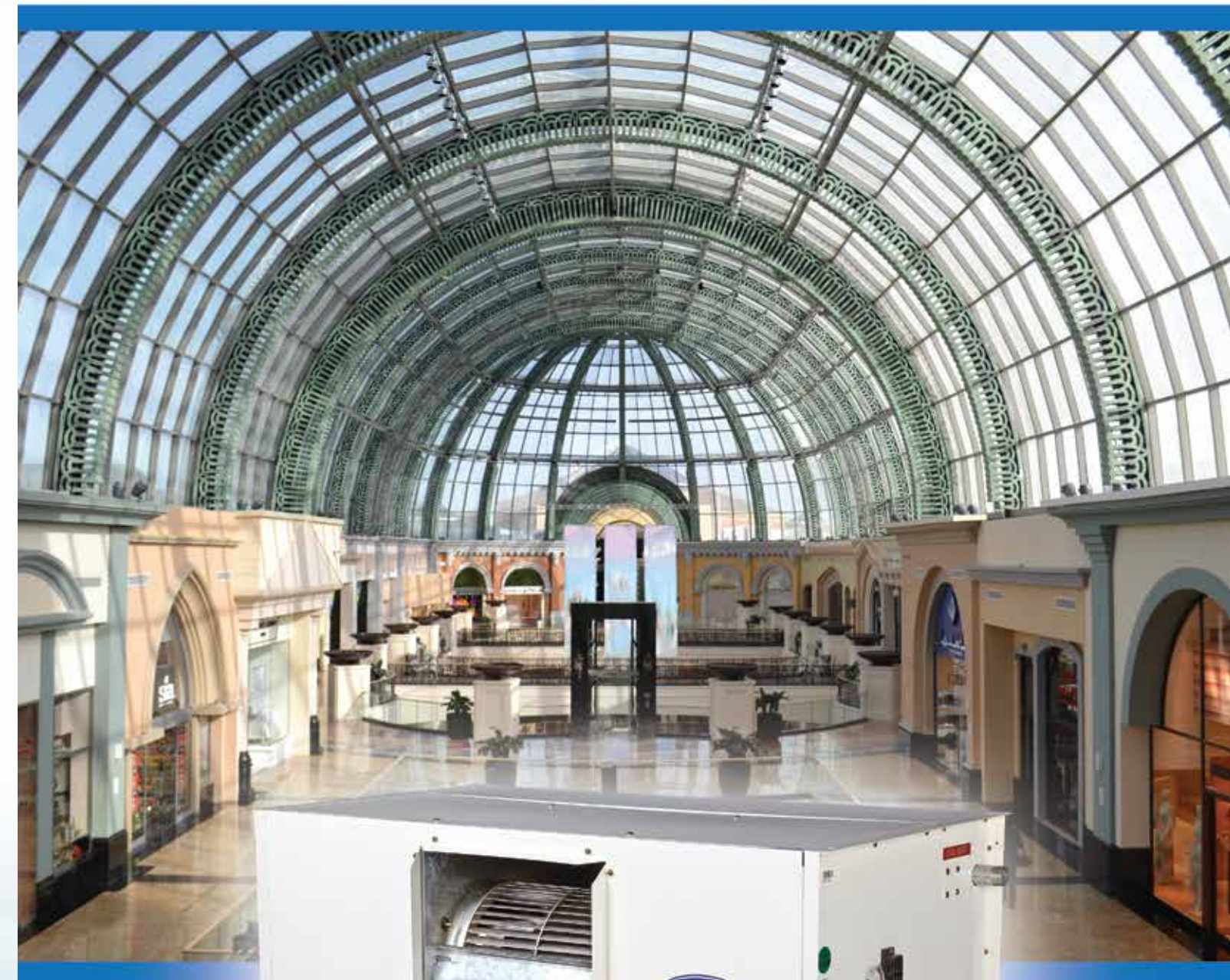
### Technical Specification

Model			40LW004	40LW006	40LW009	40LW012	40LW016
Air Flow Rate		CFM	1200	2000	3000	3500-5500	5000-6800
Nominal Cooling Capacity*	4 Row	TR	3.0	5.0	7.5	12.0	15.0
	6 Row	TR	4.5	7.5	11.25	18	22.5
Rated Power Supply		Volts - Hz -Ph	230 ± 10% - 50 - 1			400 ± 10% - 50 - 3	
<b>Cooling Coil</b>							
Face Area		Sq.ft.	3.07	3.81	5.30	9.68	11.25
Fin Spacing		FPI	13				
Tube (Material / Type)		Copper / Plain					
Fin (Material / Thickness)		Aluminium / 0.12mm					
No. of Circuit (4 Row)		Nos.	4	4	4	10	10
No. of Circuit (6 Row)		Nos.	7	7	7	13	13
<b>Fan Details</b>							
Type		Double Inlet Double Width					
Total Pressure		mm of WG	20.0	20.0	20.0	35.0	35.0
Fan Speed		RPM	920	920	920	950	1090
<b>Air Moving Assembly</b>							
Drive (Type)		Direct			Pulley & Belt		
STD. CFM Fan Pulley Size			—	—	—	160/25/2 SPA	160/25/2 SPA
STD. CFM Motor Pulley Size			—	—	—	106/28/2 SPA	106/28/2 SPA
MAX. CFM Fan Pulley Size			—	—	—	224/25/2 SPA	250/25/2 SPA
MAX. CFM Motor Pulley Size			—	—	—	125/28/2 SPA	150/28/2 SPA
Fan Motor Rating		HP	1/2	1/2	1/2 x 2	3	5
<b>Filter</b>							
Quantity		Nos.	1	1	1	3	3
Media		Non Woven Synthetic Fibre					
Face Area		Sq.ft.	3.81	4.57	6.02	10.1	
<b>Connections</b>							
Coil		mm	25	25	25	50	50
Drain		mm	20	20	20	28.5	28.5
<b>Dimensions</b>							
Overall Size (WxLxH)		mm	667x971x460	667x1143x460	667x1480x460	974x1866x680	974x1866x680
Net Weight		Kg	55.0	65.0	85.0	173.0	180.0

\*Nominal Cooling Conditions — Entering/Leaving Water Temperature: 7/12°C, Entering Air Temperature: 27°C (DB) 19.5°C (WB)

## 40LW Ceiling Suspended Air Handling Unit

Capacity Range: 1200 cfm to 6800 cfm



For more details, please contact our Carrier India sales office:

**Factory & Corporate Office:** Carrier Airconditioning & Refrigeration Ltd, Kherki Daula Post, Narsingpur, Gurgaon 122004, Tel: 0124-4825500  
**Sales Offices:-** Delhi/NCR: 0124-4707311/4707333 Ghaziabad: 0120-4183260 Lucknow: 0522-2202346/2230598 Chandigarh: 0172-5007548/5007550 Jaipur: 0141-5113444/5113999 Indore: 0731-4070378 Mumbai: 022-61700700 Ahmedabad: 079-40267777 Pune: 020-67045100 Kolkata: 033-40201300 Chennai: 044-42222888 Bangalore: 080-43442000 Hyderabad: 040-41100222 Cochin: 0484-4029001/0

CIN: U74999HR1992FLC036104/ Website: www.carrierindia.com/ E-mail: bssindia@carrier.utc.com

**TOTALINE**



# Carrier India



Carrier is a part of UTC Building & Industrial Systems, a unit of United Technologies Corp.(UTC), a leading provider to the aerospace and building systems industries worldwide. UTC was ranked at 151<sup>st</sup> position in Fortune 500 list of global corporations in 2014.

Built on Dr. Willis Carrier's invention of modern air conditioning in 1902, Carrier's research, expertise and innovation have resulted in market leading solutions. We recognize the vital importance of maintaining a responsible balance between the comfort we create today and the world we live in tomorrow. Millions of people trust Carrier's leadership in delivering efficient solutions. To know more, please visit <http://www.carrier.com>.

Over the years, Carrier India has significantly contributed in promoting sustainability. Carrier is the only company in the world to be a founding member of the Green Building Councils of the U.S., Argentina, China, India, Singapore and France. In fact, Carrier was instrumental in launching the U.S. Green Building Council® (USGBC) in 1993 and was the first company in the world to join the organization.



It invests in R&D resources to advance energy efficiency, ozone layer protection and low global warming technologies in its products. Carrier's AdvanTE<sup>3</sup>C Solutions Center is a natural evolution of Carrier's approach to sustainability and supports customers around the world in developing strategic, energy-efficient and custom-engineered building solutions.

Carrier's efforts in promoting sustainability can be quantifiably measured by means of the Carrier CO<sub>2</sub>NSERVATION Meter, which meticulously calculates the avoided greenhouse emissions with the help of Carrier products, globally since 2000. To know more about the Carrier CO<sub>2</sub>NSERVATION Meter, please visit <http://www.naturalleader.com>.



ACE(Achieving Competitive Excellence) is our proprietary operating system to ensure world-class quality in our products and processes. With its relentless focus on increasing efficiency and reducing waste, ACE is integral to the company's performance model.The company's facilities worldwide are using the operating system to improve quality and customer satisfaction while lowering cost.

Carrier's presence in India dates back to 1986, when Carrier India was established. In the year 1988, the first manufacturing facility was commissioned in Gurgaon, Haryana. Spread in an area of 19 acres, this state-of-the-art facility consists of highly automated manufacturing unit, an excellent R&D Center and an advanced Quality Clinic. Currently, products manufactured in this facility include Cassettes, Ducted Splits, Package Units, Air Cooled & Water Cooled Screw Chillers, Air Cooled & Water Cooled Reciprocating Chillers, Fan Coil Units, Air Handling Units, Refrigeration products and Fire & Security products.

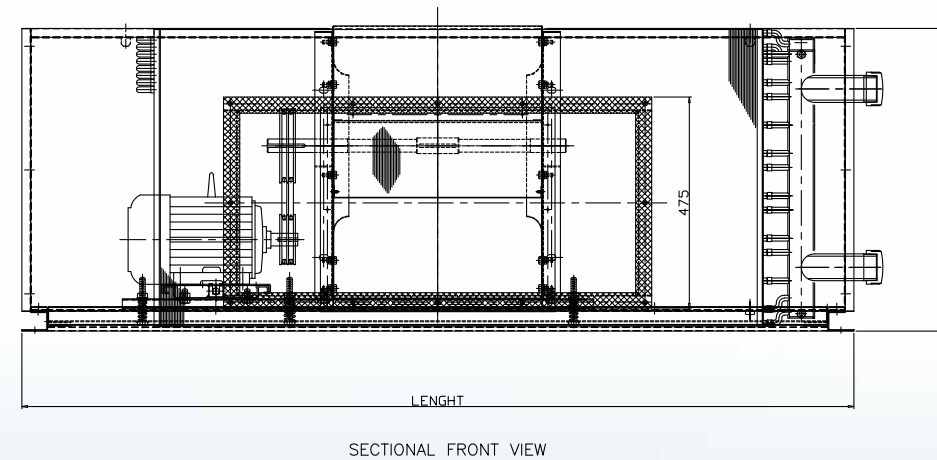
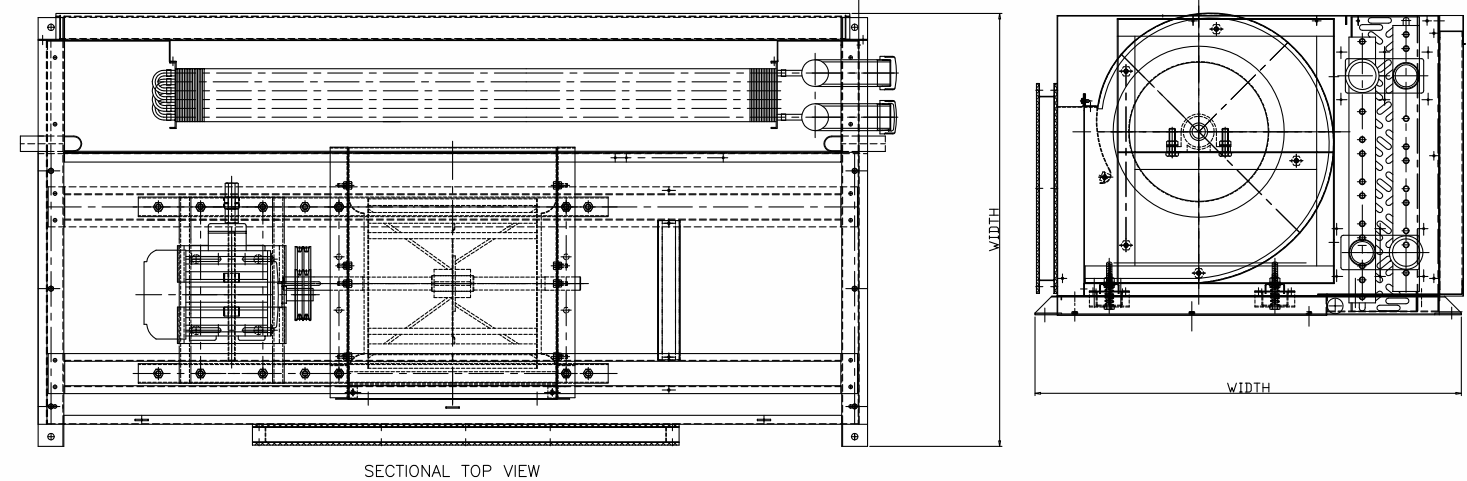


Our comprehensive Environment, Health & Safety (EH&S) program establishes a framework and provides tools for implementing our EH&S practices into our business & culture. The Carrier Gurgaon facility holds a distinctive record of delivering over 17 million man hours without a lost work day incident, clearly citing the measures of safety followed here.

Carrier India has 14 sales and service offices, more than 800 sales and service channel partners - throughout the country, ensuring efficient solutions and quality services at customer's doorstep. To know more visit <http://www.carrierindia.com>.

## FEATURES

- Compact Design :** Saves installation space
- High Efficiency:** Effective heat transfer using high efficiency cooling coils and dual sine wave fins
- Low Height:** Fits easily in false ceiling space
- Quiet Environment:** DIDW centrifugal blowers, quiet and suitable for long ducting



Model	Length (mm)	Width (mm)	Height (mm)
40LW004	971	667	460
40LW006	1143	667	460
40LW009	1480	667	460
40LW012	1866	974	680
40LW016	1866	974	680